



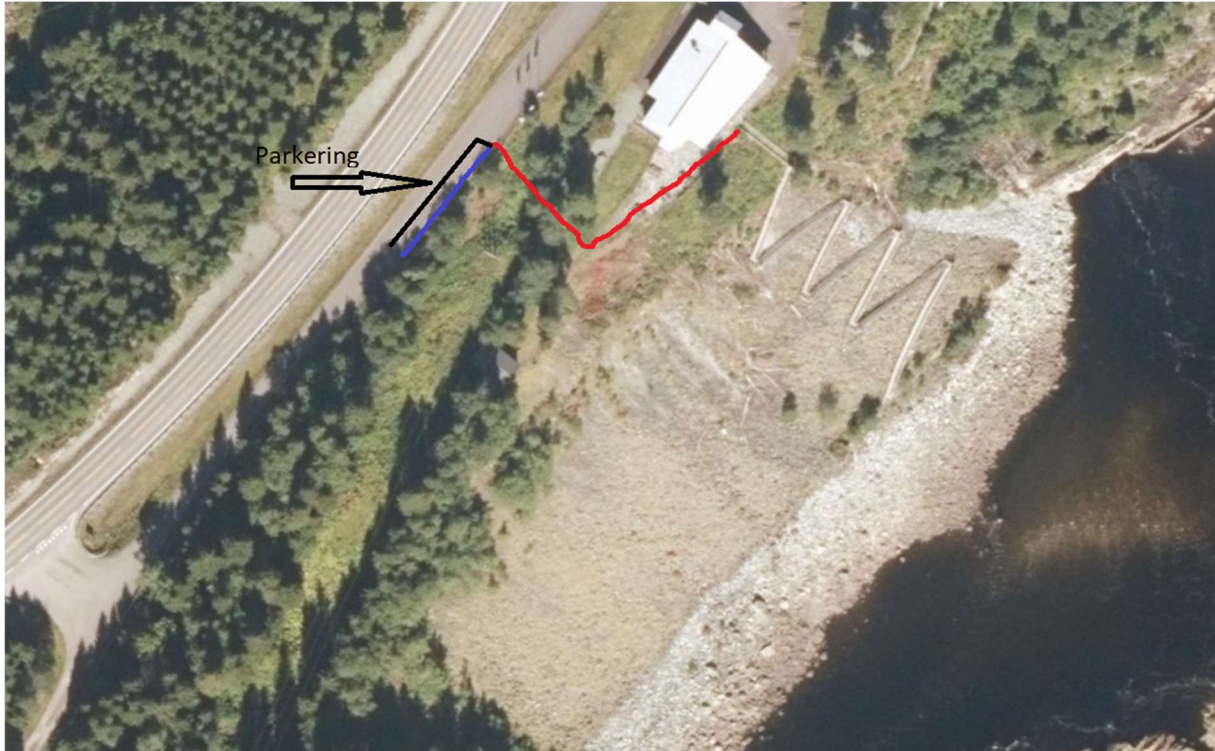
New Nedre Fiskumfoss Hydropower Plant Part of the Climate Solution

NTE is building a new hydroelectric power station at Nedre Fiskumfoss. The station is specially designed for the needs of a national salmon river.

The project is therefore good news not simply for NTE, but also the climate, the local community and the salmon in the river. The Fiskumfoss development will increase local production of renewable energy, while reducing the reliance on fossil fuels. The project means investment and jobs in the local community, as well as improving the environment and living conditions for salmon.

During the construction period from March 2019 to 2023, the level of activity will be high. Throughout the process, we will take care of the interests of the salmon and the anglers. No work will take place in the river during the salmon-fishing season or during spawning.

Construction work on land will continue, however, unabated. Heavy traffic and noise issues will therefore persist throughout the period. Site conditions will change from time to time, depending on how far the project phases have progressed.



Visitor parking will be provided close to the E6 European highway. The site area will not be open to the public, and normal health and safety precautions will apply.

For parking and access to the river, anglers are invited to contact the Site Office directly. This to ensure a smooth process.

Facts: Nye Nedre Fiskumfoss Hydropower Plant

- The new power station will generate 382 GWh renewable energy in a normal year. This represents an increase of 105 GWh compared to the old HEP station.
- The new power station will be hidden within the mountain, with little visible sign of its existence once work is complete.
- The power station will be excavated some 30 metres below the E6, and the various tunnel races will cross under the railway line at two points, roughly 70 and 90 metres into the rock.
- Approximately 130,000 cubic metres of waste rock will be excavated from the tunnels. Of this volume, about 40,000 cu.m is for the station hall. The headrace sluices and two transformer galleries require 10,000 cu.m. The rock will go to local quarries and Grong Local Council's building projects.
- Environmental audits will be conducted before, during and after the construction process.
- The old HEP station will continue to operate as normal during the construction period.
- Existing buildings at the old station will remain in use as before